

# Prelude Awards

A Program of the Indiana Association of School Principals



# 2010 PRELUDE AWARDS

The Children's Museum of Indianapolis and the Indiana Association of School Principals announce the expansion and transition of the Prelude Awards from Marion County to now include the eight counties surrounding Marion County. The Prelude Awards is a dynamic and comprehensive program developed in 1984 to provide youth with opportunities to learn and compete in the areas of Vocal Music Composition, Instrumental Music Composition, Video/Film, and Visual Art.

The Prelude Awards are now a part of IASP's unique inter-scholastic academic competition programs that allow Indiana students an opportunity to compete in academics similar to the way they compete in athletics. "Under the facilitation of IASP, Prelude will begin a new tradition of celebrating the creative spirit of originality with the students. The new focus will be on original works and compositions created by the participating students in the areas of video/film, music composition and the visual arts," said Gerald Mohr, IASP Executive Director.

In the first year of transition, IASP will expand the Prelude Awards to reach teachers and students beyond Marion County to include the nine county Metropolitan Indianapolis area. IASP will gradually expand the program providing students throughout Indiana with an opportunity they've never had before, to participate in the prestigious Prelude Awards.

Scholarships are awarded to winners in each of the arts categories and are to be applied to the tuition of the institution of higher-education of their choice. First place winners in all categories will be awarded \$1,000; \$250 to 2nd place winners, and \$100 to 3rd place winners. A \$400 award will be given to the four winning entrants schools.

*Information follows regarding each of the four categories and instructions for schools and student's to submit an application.*

**SCHOOLS:** Open to schools in Boone, Hamilton, Hancock, Hendricks, Johnson, Madison, Marion, Morgan and Shelby counties. Each school may submit three entries per competition category (total of 12 entries allowed per school). Department of Student Programs (DSP) member schools will submit one entry fee of \$50; non-member DSP schools will submit one entry fee of \$250. This entry fee allows up to 12 student entries. Please make copies of the following packet to distribute to Fine Arts teachers and interested students.

# 2010 Prelude Awards *Timeline*



## Prelude Awards

A Program of the Indiana Association of School Principals



Please read through this document carefully and retain it for your files.

1. Dec. 11, 2009: School must submit *Intent to Participate* form and entry fee; must be postmarked no later than Dec. 11, 2009 (one form per school required, allows up to 12 entries). Late applications will not be accepted. Mail/deliver to IASP office (address below).
2. December 16, 2009: IASP/DSP will mail designated Prelude Awards contact person at school with appropriate student entry application forms and entry numbers for each student.
3. January 9, 2010: Visual Arts entries judging at The Children's Museum. Video and Film, Vocal Music Composition, and Instrumental Music Composition entry submission deadline.
4. January 20, 2010: Semi-Finalists in all categories announced
5. February 10, 2010: Finalists announced (Top 5 in each category)
6. March 19, 2010: Prelude Awards celebration at The Children's Museum

Please review the General Contest Requirements and Criteria for the category you enter. You will be held accountable for adhering to these criteria.

Mail or deliver Individual Entry Form and work to:

IASP, Dept. of Student Programs  
11025 East 25th Street  
Indianapolis, IN 46229

For more information about the 2010 Prelude Awards, please visit [www.iasp.org/dsppreludeawards](http://www.iasp.org/dsppreludeawards) or email Kyle Harrop, [kharrop@iasp.org](mailto:kharrop@iasp.org) or Diane Abel, [dabel@iasp.org](mailto:dabel@iasp.org)



**Prelude  
Awards**

A Program of the Indiana Association of School Principals



# 2010

## Prelude Awards

*School Intent to Participate Form*

School Name \_\_\_\_\_

School Address \_\_\_\_\_

City \_\_\_\_\_ Zip \_\_\_\_\_

Phone \_\_\_\_\_

County: (Circle One) Boone      Hamilton      Hancock      Hendricks      Johnson

Madison      Marion      Morgan      Shelby

Our school intends to submit entries in the 2010 Prelude Awards competition in the following categories:

\_\_\_\_\_ # of entries (maximum 3 entries) in the Visual Arts category

\_\_\_\_\_ # of entries (maximum 3 entries) in the Video/Film category

\_\_\_\_\_ # of entries (maximum 3 entries) in the Vocal Solo Music Composition category

\_\_\_\_\_ # of entries (maximum 3 entries) in the Instrumental Ensemble Music Composition category

I understand there is an entry fee of \$50 for Department of Student Programs member schools or a \$250 entry fee for non-DSP member schools. This entry fee will cover all entrants from this school, and a check or purchase order is enclosed with this Intent to Participate application.

I understand that I will be the Prelude Awards contact person for this school and all communication regarding Prelude Awards will be sent to me via email or mail, and that I will distribute the appropriate information to student participants.

Contact Person (please print) \_\_\_\_\_

Position at school \_\_\_\_\_

email \_\_\_\_\_ Date \_\_\_\_\_

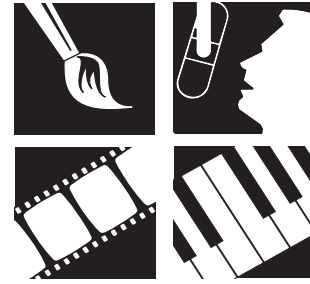
This form must be returned no later than December 11, 2009 to:

IASP/DSP, 11025 E. 25th St., Indianapolis, IN 46229.

For additional information: [www.iasp.org/dsppreludeawards.aspx](http://www.iasp.org/dsppreludeawards.aspx) or [dabel@iasp.org](mailto:dabel@iasp.org) or [kharrop@iasp.org](mailto:kharrop@iasp.org)

# VISUAL ARTS

2010 Prelude Awards



Contestants must submit a portfolio that includes five works of art. Works may include painting, drawing, sculpture, jewelry, fiber arts, creative woodwork, ceramics, graphic design, photography, digital images and mixed media.

All pieces must be the original work of the artist. Work copied from photographs or from the work of other artists is not permitted.

## Prelude Awards

A Program of the Indiana Association of School Principals



Two-dimensional work must be matted or mounted to best display it for upright viewing. Framing is permitted, though not required. Two-dimensional work, including frame, should not exceed 36 inches in any direction or exceed 20 pounds.

The use of a base or platform for three-dimensional work is at the contestant's discretion. It is recommended to use a base or platform only if it enhances or is an integral part of the work. Three-dimensional work should not exceed 50 pounds or 24 inches in any direction.

IASP reserves the right to disqualify works deemed inappropriate for either the IASP or The Children's Museum audience. The graphic depiction of sex, violence or nudity is prohibited.

Individual entry forms will be mailed to school's Prelude Awards contact person for distribution to those entering the Visual Arts category. Each entry form will be pre-labeled with an assigned entry number. Students must return a completed entry form and include the assigned entry number on the back of each piece accompanying the entry form.

Entries are to be delivered to The Children's Museum on Saturday, Jan. 9, 2010 between 9:00 and 10:00 a.m. Entries will be judged that day. Participants must pick up their artwork between 3:00 and 5:00 p.m. the same day.

Please note that IASP and The Children's Museum cannot guarantee the safety of works that are not picked up by the specified time. The student does not have to deliver the artwork or be present the day of the judging.

### Criteria

Portfolios will be judged on overall excellence as demonstrated by the following criteria:

**Originality:** Does the portfolio reflect the personal expression and artistic vision of the contestant?

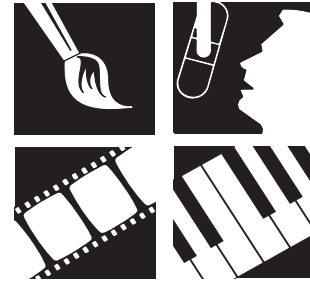
**Breadth or Depth:** A contestant whose portfolio includes diverse types of mediums and/or subjects will be judged on his/her mastery of each medium represented, as well as his/her ability to explore the chosen subject matter with depth. A diverse portfolio should also achieve a wholeness in effect.

A contestant whose portfolio reflects a concentration in one medium or subject will be judged on his/her mastery of that medium and on his/her ability to express an intensity of feeling and insight.

**Technical Skills:** Does the contestant's work show a mastery of skill and technique in each medium used?

# VIDEO AND FILM

2010 Prelude Awards



## Prelude Awards

A Program of the Indiana Association of School Principals



Contestants may submit a video/film work not to exceed 10 minutes in length. Entries may be dramas, documentaries, comedies, or animated projects (including computer animation). Adaptations are permitted, but should reflect the unique point of view of the filmmaker. Use of music is acceptable, but music videos are not permitted. (This includes video “photo albums” of friends and family).

The video may be shot on film, HI-8, S-VHS or digital. The final submission must be DVD. Contestants must submit a written synopsis of the subject matter of the video/film, not to exceed 100 words. In addition, contestants must describe the equipment they used for the project (for example: HI-8, non-linear editing). Failure to include this information will result in disqualification.

Individual entry forms will be mailed to school’s Prelude Awards contact person for distribution to those entering the Video and Film category. Each entry form will be pre-labeled with an assigned entry number. Students must return a completed entry form and include the assigned entry number on the back of each piece accompanying the entry form.

Entries should be clearly labeled with the title and entry number on the DVD and on the submission envelope. Contestants should include a sheet with the following information: name, grade level, School name, address, and phone number, and title of video. The contestant’s name should not appear in the video at all. Videos that include the contestant’s name will be disqualified. Contestants should retain a copy of their work. The IASP will not return video submissions.

Submissions will be judged on overall excellence as demonstrated by the following criteria:

Originality of concept and presentation:

Does the video reflect the unique point of view of the filmmaker?

Ability to communicate intent/purpose of the work:

Is the story, message, mood and/or theme clear to the viewer?

Artistic expression:

Shot composition, creative use of lighting, music, editing techniques.

Technical presentation:

Camera technique, clear audio, smooth editing transitions.

Emotional impact:

Is the video moving? Thought-provoking?

# INSTRUMENTAL MUSIC COMPOSITION

2010 Prelude Awards

Entries for the 2010 Prelude Awards Instrumental Music Composition will be for Instrumental Ensembles. Students may write for any combination of three or more instruments.

Pieces must be the original work of the student, although students are encouraged to work with a mentor or teacher to help guide their efforts. Pieces may be the collaborative work of a composing team of students.

Arrangements of previously existing melodies are permissible, but should represent the original viewpoint of the composer. Student submissions should include an audio CD recording (or .mp3 format) of the piece, and a paper copy of the score. Submissions should also include a written description of the piece, not to exceed 100 words. Recordings of the piece should be no shorter than 2:30 minutes, and no longer than 6:00 minutes. Recordings may either be live performances or audio created by composing software. The student composer does not have to be a performer on any live recording submitted for judging. Judging will be based solely on the composition of the piece. Judging will not consider the quality of the recording or the quality of the performance. The content of the piece, as well as its form, will be of free choice.

Individual entry forms will be mailed to school's Prelude Awards contact person for distribution to those entering the Instrumental Music Composition category. Each entry form will be pre-labeled with an assigned entry number. Students must return a completed entry form and include the assigned entry number on the back of each piece accompanying the entry form.

Entries should be clearly labeled with the title and entry number on the CD, score, and on the submission envelope. Contestants should include a sheet with the following information: name, grade level, School name, address, and phone number, and title of piece. The contestant's name should not appear on the CD or score at all. Submissions that include the contestant's name will be disqualified. Contestants should retain a copy of their work. The IASP will not return video submissions.

Compositions will be judged on overall excellence as demonstrated by the following criteria:

Originality of concept and presentation:

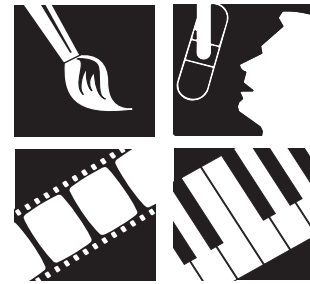
Does the song reflect the unique point of view of the composer?

Ability to communicate intent/purpose of the work:

Is the story, message, mood and/or theme clear to the listener?

Musical expression:

Use of melody, harmony, structure, arrangement, and originality.



## Prelude Awards

A Program of the Indiana Association of School Principals



# VOCAL MUSIC COMPOSITION

2010 Prelude Awards

Entries for the 2010 Prelude Awards Vocal Music Composition will be for Solo Vocal Works. Students may compose for a solo voice in any range, either with or without accompaniment.

Songs must be the original work of the student, although students are encouraged to work with a mentor or teacher to help guide their efforts. Songs may be the collaborative work of a songwriting team of students.

Use of previously existing lyrics is permissible, but should be noted in the submitted song description. Student submissions should include an audio CD recording (or .mp3 format) of the song, and a paper copy of any combination of score/lyrics sheet/chord changes. Submissions should also include a written description of the piece, not to exceed 100 words. Recordings of the songs should be no shorter than 2:30 minutes, and no longer than 6:00 minutes. The student composer does not have to be the performer on the recording submitted for judging. Judging will be based solely on the composition of the song. Judging will not consider the quality of the recording or the quality of the performance. The content of the piece, as well as its form, will be of free choice.

Individual entry forms will be mailed to school's Prelude Awards contact person for distribution to those entering the Vocal Music Composition category. Each entry form will be pre-labeled with an assigned entry number. Students must return a completed entry form and include the assigned entry number on the back of each piece accompanying the entry form.

Entries should be clearly labeled with the title and entry number on the CD, score, and on the submission envelope. Contestants should include a sheet with the following information: name, grade level, School name, address, and phone number, and title of piece. The contestant's name should not appear on the CD or associated paperwork at all. Submissions that include the contestant's name will be disqualified. Contestants should retain a copy of their work. The IASP will not return video submissions.

Compositions will be judged on overall excellence as demonstrated by the following criteria:

Originality of concept and presentation:

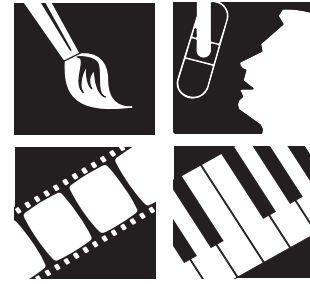
Does the song reflect the unique point of view of the composer?

Ability to communicate intent/purpose of the work:

Is the story, message, mood and/or theme clear to the listener?

Musical expression:

Use of melody, lyrics, structure, arrangement, and originality.



## Prelude Awards

A Program of the Indiana Association of School Principals

